

FxPro VPS

Virtual Private Server

An introduction to subscribing and
using FxPro's VPS service

User Manual



Disclaimer

Trading Contracts for Difference on margin involves a high degree of risk and may not be suitable for all investors.

The leverage created by trading on margin can work against you as well as for you. Therefore, the Firm cannot guarantee the performance and/ or results of the System. Prior to opening an account with FxPro, running the System, trading on derivative products offered by and entering into any transaction with, FxPro, you should carefully consider any risks including but not limited to those involved in trading Contracts for Difference, your financial situation, needs, your objectives, and your level of experience.

By using the System you understand and accept that there is no system free from any errors and you accept the existence of the possibility to lose a part or even the entire initial investment.

You should take steps to ensure that you understand the products offered for trading and the functioning of the transaction. You should also consider seeking advice from your own independent financial advisors in making this assessment.

Any opinions, analyses, prices, research, statistics or other information contained is provided as general market commentary, and does not constitute investment advice.

FxPro has taken reasonable measures to ensure the accuracy of this information, however, does not warrant the performance or fitness of the System for a particular purpose of its accuracy.

Under no circumstances FxPro shall be held responsible and will not accept any liability for any trading or other losses or damages, including without limitation to, any loss of profit, which may incur directly or indirectly as a result of using the System.

Further, FxPro does not accept any responsibility for any loss, disruption or damage to your data or your computer system which may occur whilst using data described in this content. FxPro does not warrant that the functions contained herein will be uninterrupted or error free. Also, FxPro does not guarantee that defects will be corrected or that these functions will be updated.

You agree to hold harmless FxPro, its officers, directors, employees, advisors, consultants or other partners for any act or omission in the course of or in connection with the System.

It is the responsibility of the recipient of this manual to ascertain the terms of and comply with any local law or regulation to which they are subject.

The provision by FxPro of any products or services shall be expressly subject to the terms and conditions as contained in the contract for the supply of such products or services.

Overview

What is a VPS?

Virtual Private Server (VPS) is a remote computer that allows you to run EAs continuously with low latency of trade execution.

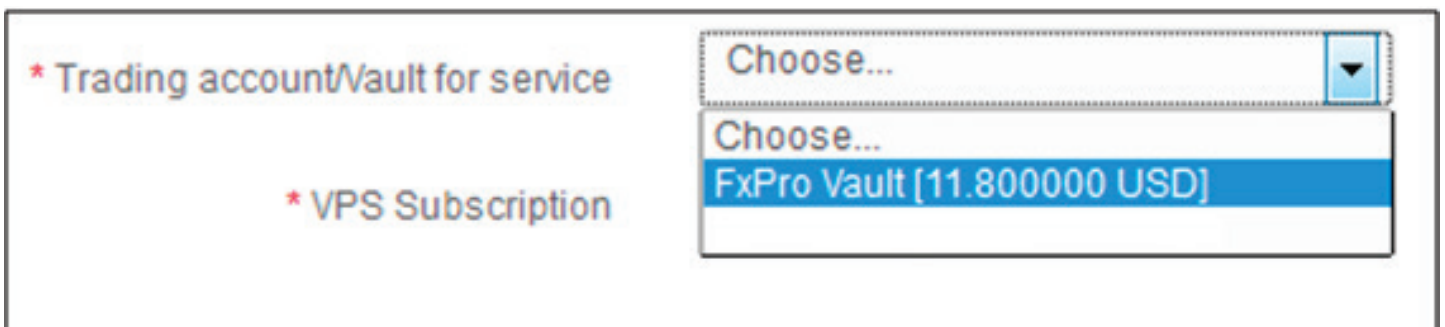
For example a client in China may have anything between 300-400ms of latency when trading normally without a VPS. If they were to execute their trades from the VPS they would have anywhere between 1-5ms of latency, therefore almost ensuring the original requested price.

Subscribe for VPS

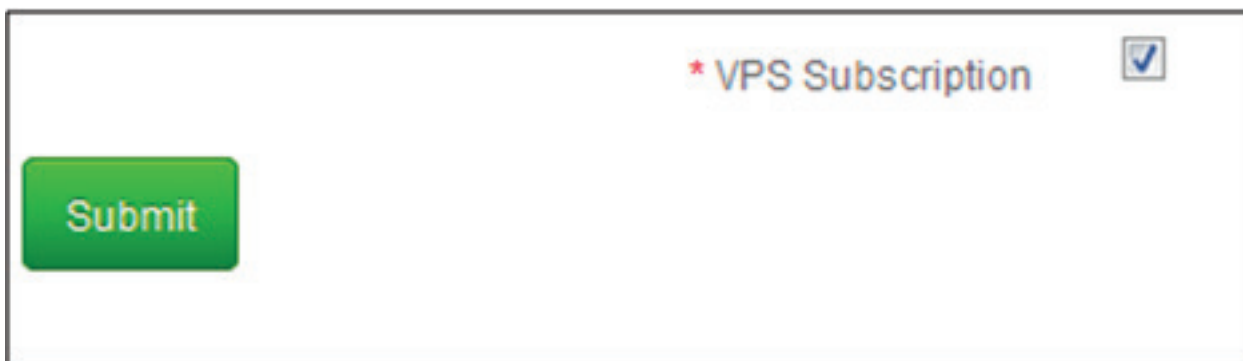
Fistly select the VPS service within Direct



Select a Vault or trading account for the initial and reoccurring \$30 monthly subscription fee



Next tick the VPS subscription box and press submit



After completing these steps the VPS service will be created and you will receive the following email with account login info and instructions:

From: Sent: Wed 05/06/2013
To:
Cc:
Subject: Welcome to your BeeksFX - FxPro Package Account Details Enclosed

Hi

First of all welcome, from the whole team, to the BeeksFX VPS service for FxPro, the premier VPS service for automated traders. We value your opinion of the service.

Login and RDP Details

Your IP address is
Your User name is
Your RDP port is
Your Initial Password is (you will be asked to change this on first log in, please change password to a secure combination and do not share this)

To access your VPS you need to firstly please fill in this form with the IP address and Port supplied above, then download the RDP file.

<https://www.beeksfx.com/index.php/rdp>
Double click the rdp file to connect your VPS.

POM Application

To assist traders we have designed an application which will automatically start MT4 on any VPS reboot, this is called the POM application, this is already on the VPS desktop, it is a simple drag and drop application which requires you to drag any application you wish to start into the desktop app

To configure POM please follow the link below.....it literally takes seconds

<https://support.beeksfx.com/index.php?Knowledgebase/Article/View/5/1/pom-application-application-which-will-automatically-start-mt4-on-any-vps-reboot>

If there are any problems during log in or going forward please raise a support ticket here:

<https://support.beeksfx.com/index.php?Tickets/Submit>

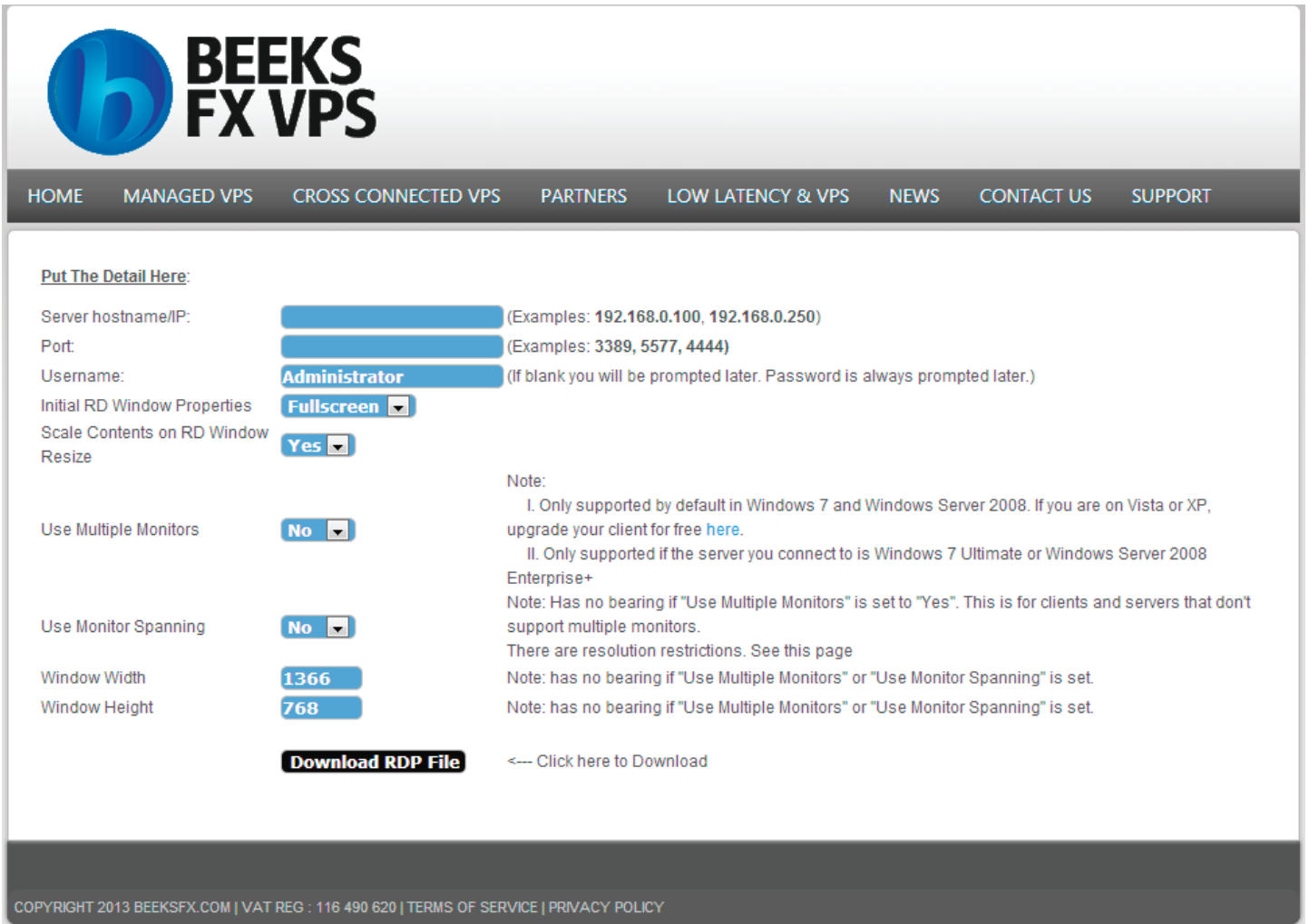
Good Luck and Happy Trading

Please note that it may take up to 2 hours to build your vps. Build business hours are from Monday – Friday 9am-6pm.

Click on the VPS access link

<https://www.beeksfx.com/index.php/rdp>

Add the required information according to what you have received in your account details email



**BEEKS
FX VPS**

HOME MANAGED VPS CROSS CONNECTED VPS PARTNERS LOW LATENCY & VPS NEWS CONTACT US SUPPORT

Put The Detail Here:

Server hostname/IP: (Examples: 192.168.0.100, 192.168.0.250)

Port: (Examples: 3389, 5577, 4444)

Username: (If blank you will be prompted later. Password is always prompted later.)

Initial RD Window Properties:

Scale Contents on RD Window Resize:

Use Multiple Monitors:

Use Monitor Spanning:

Window Width:

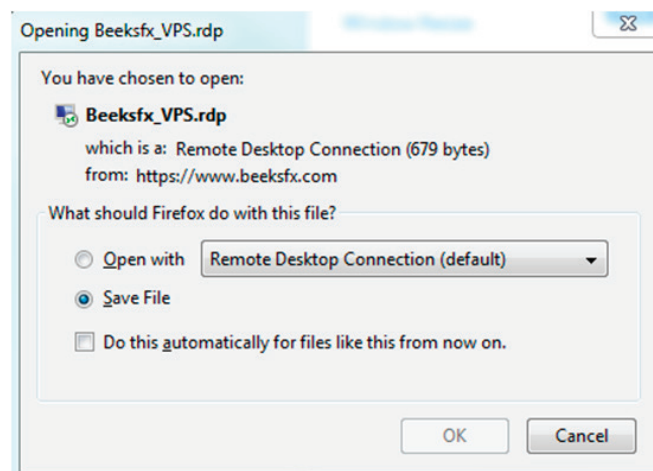
Window Height:

Download RDP File <--- Click here to Download

Note:
I. Only supported by default in Windows 7 and Windows Server 2008. If you are on Vista or XP, upgrade your client for free [here](#).
II. Only supported if the server you connect to is Windows 7 Ultimate or Windows Server 2008 Enterprise+
Note: Has no bearing if "Use Multiple Monitors" is set to "Yes". This is for clients and servers that dont support multiple monitors.
There are resolution restrictions. See this page
Note: has no bearing if "Use Multiple Monitors" or "Use Monitor Spanning" is set.
Note: has no bearing if "Use Multiple Monitors" or "Use Monitor Spanning" is set.

COPYRIGHT 2013 BEEKSFX.COM | VAT REG : 116 490 620 | TERMS OF SERVICE | PRIVACY POLICY

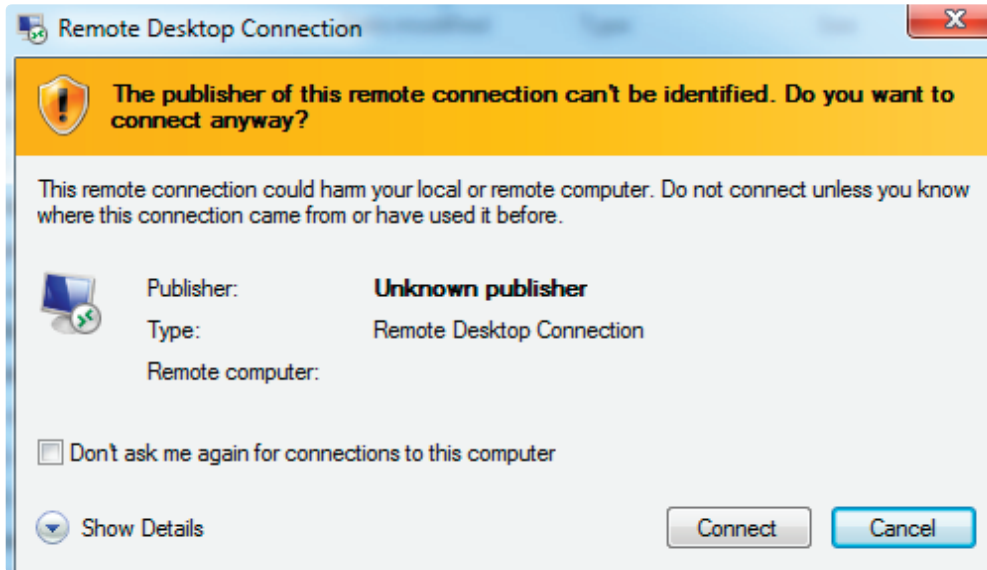
Next you will need to download the RDP file and save it to your desktop



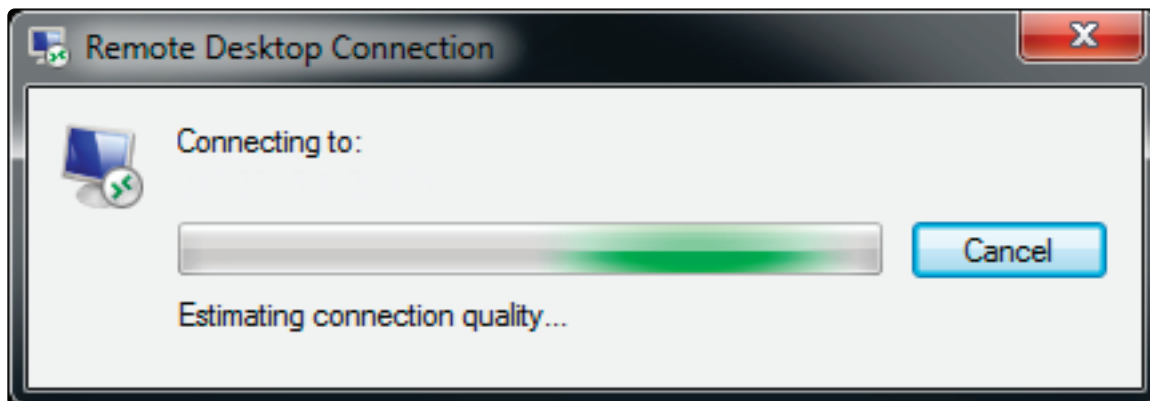
Beeksfx_VPS

Double click the Beeksfx_VPS.rdp icon on your desktop to launch the application

Click connect



The Remote Desktop Connection will begin to connect



When the credential box appears add the temporary password and select ok





You have now successfully connected to your VPS

Please note – We suggest clients to run no more than four (4) MT4/MT5 platforms with up to ten (10) expert advisors (EAs), or a single (1) cTrader platform with a cAlgo Bot on a single VPS.

POM Application

To assist traders an application has been designed which will automatically start MT4 on any VPS reboot; this is called the POM application.

To configure POM please follow the below steps:

1. On the desktop, double click BeeksFXAutoLogin.vbs
2. The username you wish to auto login as is administrator
3. Enter the current password for this username, i.e. whatever you have changed it to
4. Click ok and confirm you wish to set this up - when complete, auto login is configured on your VPS

Configure Auto Start of Programs

To configure programs to start automatically please follow the below steps:

1. Locate the program icon you wish to start automatically. In the case of MT4 instances, these are likely to be located on the desktop or in your VPS Start menu
2. Left click on that program icon and hold the button, this will allow you to drag the icon
3. Drag the icon and hover over the Start button in the bottom left of the VPS screen, still holding the left mouse button
4. When the Start menu opens, drag the icon you are still holding and hover over All Programs which will open up the programs menu
5. Still holding the left mouse button, drag the icon up and hover over Startup folder
6. When the Startup folder opens, drag the icon into that folder until you see a black line at the top of that folder
7. Finally, release the left mouse button to deposit the icon in the Startup folder

Copyrights

All content on this material has been developed and is the property of FxPro or its licensors and is protected by UK or Cyprus laws, EU legislation and international copyright and other intellectual property legislation. You should not reproduce the whole or any part of this content in any way without the prior written permission of FxPro.

Notice

The information contained in this manual and any related System provided to you "as is" by FxPro in good faith and has been derived from sources believed by FxPro to be reliable and accurate at the date of publication.



FxPro
Trade Like a Pro

for **serious** traders

Contact us today

Tel.: +44 (0) 203 151 5550 E-mail: info@fxpro.com